



12th Japan International SAMPE Symposium & Exhibition JISSE-12

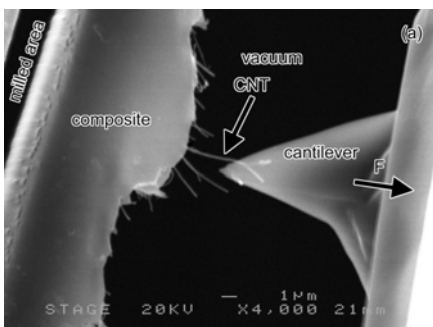
***Sustainable Development in Advanced Materials
and Processing Technology***

November 9 – 11, 2011

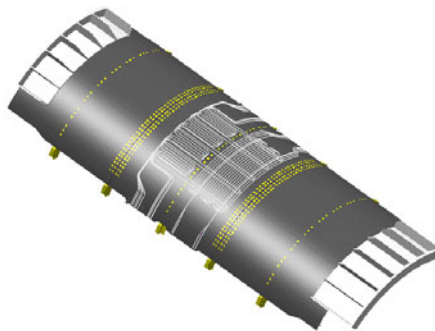
Tokyo Fashion Town Bldg., Tokyo, Japan

Sponsor: Japan Chapter of SAMPE

Cosponsor: Nikkan Kogyo Shimbun, Ltd.



Nano-materials



Structural Health Monitoring



Natural Materials(Ramie/Starch)

<http://www.smart.k.u-tokyo.ac.jp/jisse12/>

JISSE-12 follows the excellent tradition established in the past eleven symposia but contains the following attractive features:

- 3-Day Symposium and Exhibition (Nov. 9-11)
- 3-4 Plenary Lectures
- Panel Session (Plenary): Asia-Pacific Activities
- 2-3 Special Evening Lectures (Plenary)
- Industry Products Session
- 2-3 Sponsored Sessions
- Student Competition Sessions: Oral and Poster

We particularly emphasize the participation of students and young researchers from industries. Several paper and presentation awards are being prepared.

Technical Program

We are seeking high quality technical papers related with advanced materials and process, especially focusing on efficiency and environment. The following eight technical sessions are proposed, but other papers are highly welcome as long as they are related with advanced materials and process.

- (1) Nano-composites
- (2) Green Composites
- (3) Polymer Matrix Composites
- (4) MMC, CMC, C/C: High-Temperature Applications
- (5) Structural Health Monitoring, Nondestructive Evaluation, and Experimental Characterization
- (6) Numerical Modeling and Structural Design
- (7) Aerospace Applications
- (8) Automobile, Marine, Ground Transportation, and Civil Infrastructures

Call for Papers

150-word Abstract Submission Deadline: ~~March 31, 2011~~ June 30, 2011(Extended)

150-word Abstract should be submitted through our URL. The abstract should be prepared by using the MS word format template file downloaded through our URL (<http://www.smart.k.u-tokyo.ac.jp/jisse12/>).

Authors will be informed of the acceptance of their papers by July 10, 2011.

6-page Full Paper Submission Deadline: ~~July 31, 2011~~ August 22, 2011(Extended)

The 6-page (at maximum) full paper should be prepared by following the instruction obtained through our URL (<http://www.smart.k.u-tokyo.ac.jp/jisse12/>). The paper submission procedure will be posted in our URL.

Registration: Early registration by ~~September 1, 2011~~ September 30, 2011(Extended)

Registration Form can be obtained from the URL. Please submit your registration form through our URL. For participants from abroad, payment of the registration fee should be by Credit Card (VISA, Master Card or AMEX) only. On the contrary, bank transfer is strongly recommended for participants staying in Japan. Early registration discount is available on or before September 30, 2011.

For any inquiry or questions on JISSE-12, please contact:

Prof. Nobuo Takeda, The University of Tokyo

Email: jisse12@smart.k.u-tokyo.ac.jp

Postal Mail Address: Secretariat of JISSE-12, c/o Prof. Takeda, Department of Aeronautics and Astronautics, School of Engineering, The University of Tokyo, 7-3-1 Hongo, Bunkyo-ku, Tokyo 113-8656, Japan